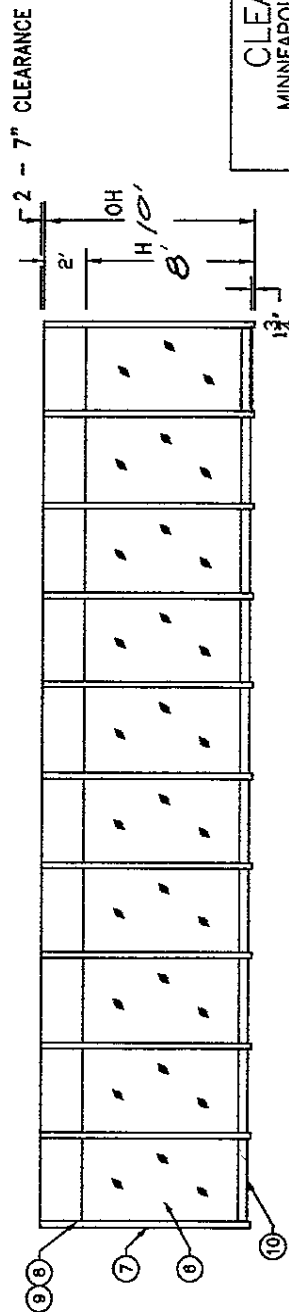
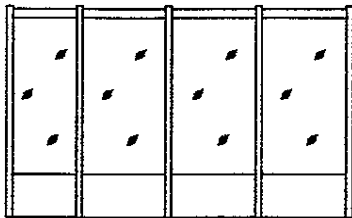
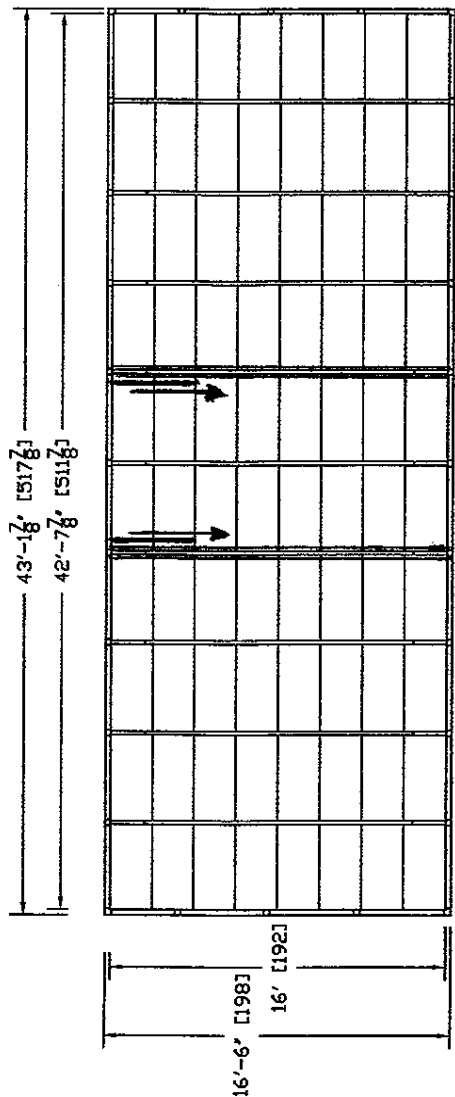


LEGEND FOR BALLOON NUMBERS

1. CAP112-424 Motorized ceiling HEPA filter.
 2. Electrical junction box
 3. Prefilter
 4. Blank panel—white vinyl covered gypsum board with sealed edges
 5. Light—fluorescent with lamps
 6. Acrylic panels
 7. 3 in. x 3 in. anodized aluminum support legs
 8. Bolt together (3 in. x 3 in.) tubular anodized aluminum support frame
 9. Anodized aluminum shroud
 10. Vertical damper
- OPTIONAL
11. QUICK FLEX prefabricated wiring
 12. Light switch included with prefabricated wiring option.
 13. Electrical junction box with prefabricated wiring option



2" - 7" CLEARANCE

CLEAN AIR PRODUCTS

MINNEAPOLIS, MN. 55445 (763) 425-9122

CLEAN ROOM - RIGID WALL

CAP591-16X42

DRAWN BY W MCG DATE 8-20-96

591 Form B 16X40(42)-rev001 A

QUOTE NO. 031388

PART NO.

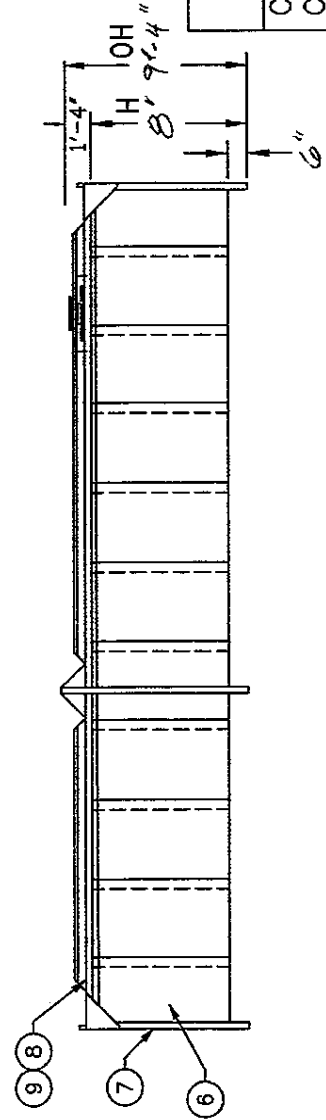
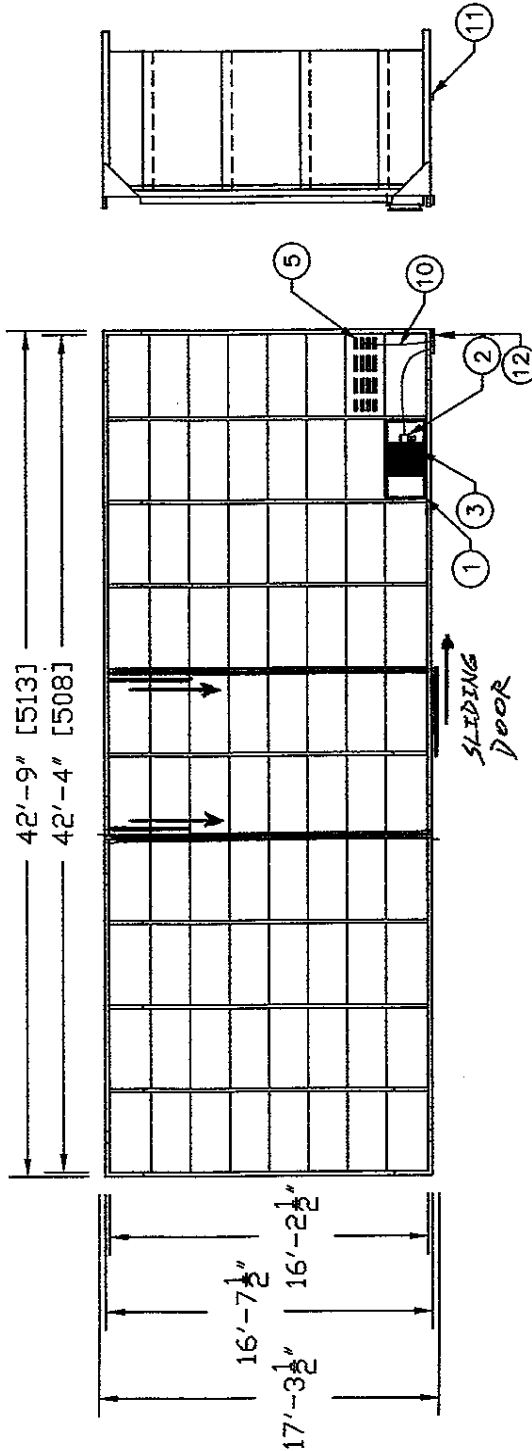
591-16x40(42)-rev001

LEGEND FOR BALLOON NUMBERS

1. CAP112-424 Motorized ceiling HEPA filter.
2. Electrical junction box
3. Prefilter
4. Blank panel—white vinyl covered gypsum board with sealed edges
5. Light—fluorescent with lamps
6. Curtains
7. Angle (4 in. x 4 in.) iron support legs with corner support gusset
8. Bolt together (2 in. x 4 in.) tubular steel support frame
9. White baked enamel painted finish

OPTIONAL

10. QUICK FLEX prefabricated wiring
11. Light switch included with prefabricated wiring option.
12. Electrical junction box with prefabricated wiring option.



FILTERS & LIGHTS CAN BE PLACED ANYWHERE IN GRID
 CURTAINS & STRIP DOORS CAN BE PLACED ANYWHERE AROUND ROOM

CLEAN AIR PRODUCTS
 MINNEAPOLIS, MN. 55445 (763) 425-9122

CLEAN ROOM, SOFT WALL
 CAP575--16x42 x 8H

DRWN BY W. MCG DATE B-20-96 QUOTE NO. 031388
 575 (Form 1) 16x40(42)--rev001 PART NO. 575-16x40(42)--rev001